



Bathing establishment Fact Sheet

Bathhouse name	FASSONI
Address	VIA LUNGOMARE AMERIGO VESPUCCI, 76
City	MARINA DI MASSA (MS)
Contacts	+39 0585 1981115
Website	https://www.bagnofassoni.com/restaurant

TESTED BY: [Handy Social Promotion Association Surpassable](#) in summer 2023

Please note The following information refers to the verification date shown at the bottom of each card. **The Association** is not responsible for any significant changes made by the property after the visit.

Summary

Bathing establishment Fact Sheet	1
Arrival at the facility	2
Private/public parking.....	2
Pathway from the parking lot to the main entrance	2
Reception.....	3
Bar/restaurant	4
Internal Pathways and common services.....	5
Internal Pathways	5
Toilet and shower accessible to guests with reduced mobility	5
Changing room	7
Beach.....	7
Children's play area	8
Swimming pool	9
Doctors' Offices/Healthcare Facilities	9


Project carried out with the contribution of the





Arrival at the facility

Private/public parking

Presence of private parking	NO
Type of private car park	Not present
Presence of parking space reserved for people with disabilities	NO
Public parking nearby	YES with n. 1 place reserved for the disabled right in front of it
Type of public car park	asphalt
	Public parking reserved for people with disabilities

Pathway from the parking lot to the main entrance

Pathway from the car park to the entrance	By means of connecting ramps from the road surface to the pavement. There are two entrances, both accessible by overcoming slight differences in height
There are markers and tactile maps	NO
Usable door/entrance width	more than 90 cm





Reception

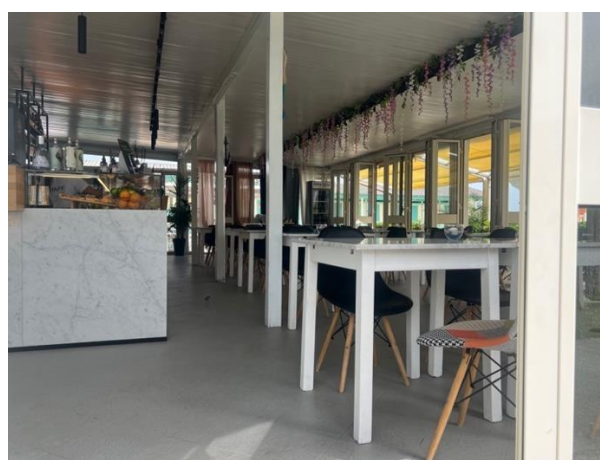
Umbrella booking system	<input type="checkbox"/> Via web <input checked="" type="checkbox"/> By phone <input checked="" type="checkbox"/> On-site
Presence of multilingual staff	YES
Presence of plant plan with key to services available	NO
Presence of visuo-tactile map	NO
Bulletin board/information panels at an average height of 130 cm in a well-lit area and font size at least 14 dpi with a contrast ratio greater than 4.5:1	NO
The staff attended training courses on welcoming people with different disabilities	NO





Bar/restaurant


Type of venue	Bar/restaurant
Access to the premises	with a 6 cm door knocker step
Usable door/entrance width	more than 90 cm
Bar counter	more than 100 cm
Types of tables	legged
Space underneath the tables from the floor	65 cm
Multilingual menu	NO
Menus with large print fonts	NO
Braille menu	NO
Table service for people with disabilities	YES
Availability of gluten-free food	<input type="checkbox"/> bread <input checked="" type="checkbox"/> pasta (on request) <input type="checkbox"/> biscuits <input checked="" type="checkbox"/> ice cream <input type="checkbox"/> Pre-packaged foods





Internal Pathways and common services

Internal Pathways



<p>Indicate whether the pathways connecting the entrance to the beach are flat or with ramps in addition to those already described</p>	<p>From the reception area and the beach, to reach the bar-restaurant and the accessible toilets, you have to overcome a ramp 52 cm long and 90 cm wide with a 16% slope.</p>
	<p style="text-align: center;">Ramp for internal paths</p>

Toilet and shower accessible to guests with reduced mobility

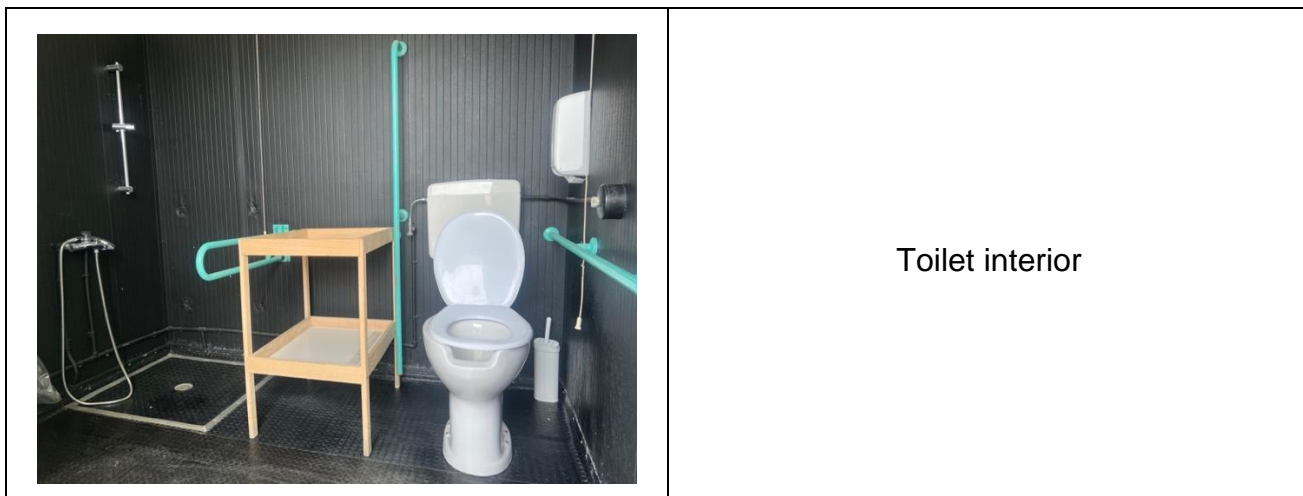
<p>Number of toilets accessible/usable by guests with reduced mobility</p>	<p>1</p>
<p>Access to the premises</p>	<p>via ramp length 160 cm, width 90 cm, gradient 13 %</p>
<p>Usable width of the entrance door</p>	<p>90 cm</p>
<p>Toilet height</p>	<p>53 cm</p>
<p>Open front toilet seat</p>	<p>YES</p>
<p>Support handles</p>	<p>on both sides</p>
<p>Flexible hand shower at the side of the toilet</p>	<p>NO</p>
<p>Free space on the sides of the toilet</p>	<p>left 20 cm</p>





	right more than 90 cm frontal more than 90 cm
Electric doorbell/phone	YES
Washbasin with space underneath for wheelchair	66 cm
Height from the ground on the bottom edge of the mirror	120 cm
Baby changing table	YES
	
Accessible shower available for guests with reduced mobility	YES in common with the toilet room
Shower type	open-type
Floor-level shower	YES
Shower chair	missing
Grab bar	YES
Presence of shower head or ups and downs	Sliding rails with lowest point height 110 cm
Electric doorbell/phone	YES





Changing room




<p>Accessible changing room available for guests with reduced mobility</p>	<p>NO</p>
--	-----------

Beach

<p>Type of beach</p>	<p>sand</p>
<p>Access to the beach</p>	<p>overcoming slight differences in height <8% and a step before the 5 cm high walkway</p>
<p>Walkway to reach the umbrellas</p>	<p>YES</p>
<p>Type of walkway</p>	<p>wood</p>
<p>Walkway width</p>	<p>95 cm</p>






	
<p>Removable Platform between the walkway and the umbrella station to facilitate the passage and parking wheelchair</p>	<p>YES upon request</p>
<p>Amphibious beach chair available for helping people with reduced mobility to enjoy swimming (owned by the establishment or by association)</p>	<p>YES</p>
	<p>Job-type beach chair</p>

Children's play area





Children's play area	Accessible to children with reduced mobility
There are games for children with reduced mobility	NO
	Children's play area

Swimming pool

The property has a swimming pool	NO
----------------------------------	----

Doctors' Offices/Healthcare Facilities

Hospitals near the facility	NOA NUOVO OSPEDALE APUANE Via Enrico Mattei, 2, 54100 Marina di Massa MS tel.: +39 0585 4931
Other Healthcare Facilities	Località Partaccia via delle Pinete 197/b Marina di Massa Tel.: +39 335 8001617

TESTED BY: **Handy Superabile Social Promotion Association in summer 2023**

